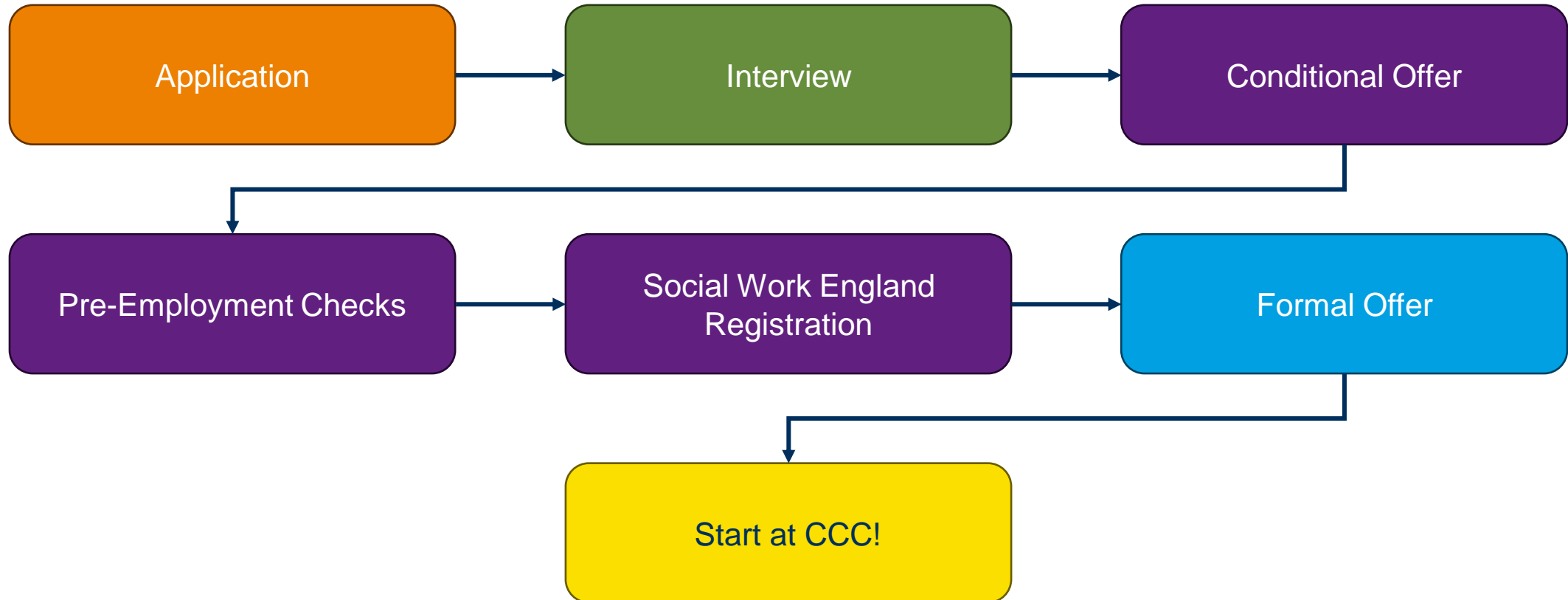


Children's NQSW Recruitment Process



Children's NQSW Application Process

Your application is made up of 3 components...

CV

Professional summary of your education and career history.

It should include your contact information, academic history, professional experience, skills and qualifications relevant to the role, achievements and awards.

Supporting Statement

Your chance to show us how your skills and experience meet the essential criteria of the job description.

Tip: use the essential criteria of the job description as headings to ensure you cover everything!

Practice Educator Reports

Will help us to understand how your placements have been, any difficulties you've overcome and some of your achievements.

You'll need to upload the final, signed copies of your reports.



Children's NQSW Interview Process

The interview will also be made up of 3 components...

Written Assessment

An opportunity for you to show how you deal with a specific case scenario and answer some specific questions.

You'll have 20 minutes* and it will be done on a laptop.

You'll be asked to present your answers within the interview.

Practice Educator Report Review

Will help us to understand how your placements have been, any difficulties you've overcome and some of your achievements.

Interview

Made up of competence and behavioural questions, as well as questions set by our children and young people, and a chance to present your assessment answers.

The panel will be made up of representatives from the service as well as L&D and the Academy.



Cambridgeshire
Academy for
Reaching
Excellence

*We'll ask if you need any reasonable adjustments when inviting you to interview which may include additional time for your assessment